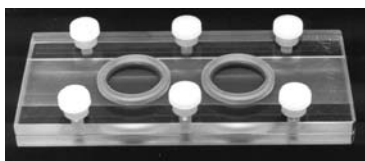
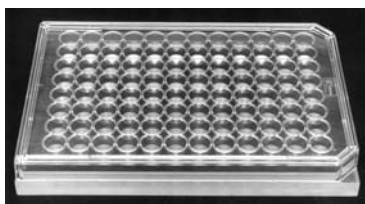


**INVENTIONS: Assistive devices, processes and reagents for scientific research and research training**



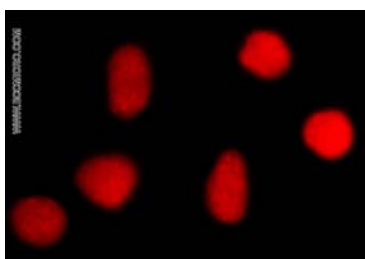
R-698. Immunofluorescent Chamber. Berrios, M. Prototype model (left). Production models are available from Electron Microscopy Sciences, Inc., Hatfield, PA.



R-864. TEM Staining Plate. Berrios, M. Prototype model (left). Production models are available from Electron Microscopy Sciences, Inc., Hatfield, PA.



R-928. A Device for Enhancing the Incubation of Membrane-Based Assays. Berrios, M. *U.S. Patent 5,906,434*. Prototype models (left) and production models (right). Production models are available from Scientific Industries, Inc., Bohemia, NY.



R-7224. Monoclonal Antibodies Directed Against the Oxidative DNA Lesion 8-Oxoguanine (8-oxoG). Conlon, K. A., and Berrios, M. Nuclear localization, indirect immunofluorescence microscopy (left). Production antibodies are available from Millipore, Inc., Billerica, MA and Santa Cruz Biotechnology, Inc., Santa Cruz, CA.

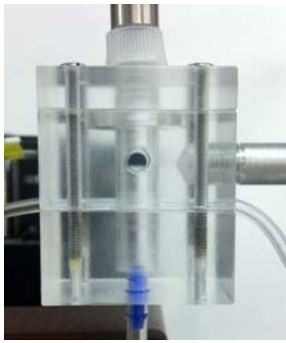
R-7113. Slide Stage for Tissue Smearing. Berrios, M.

R-7110. Clamp Device for Cell Squashing. Berrios, M.

R-7182. Multi-Well Apparatus for Probing Ligands Immobilized onto Membranes. Conlon, K. A. and Berrios, M.

R-7391. Method and Compounds for Visible Light-Induced Site-Directed Photocleavage of Proteins. Conlon, K. A. and Berrios, M.

R-7401. *Drosophila* Embryo Extracts and Chromatin Remodeling Proteins (CRP1 & CRP2): Methods and Reagents for Evaluating the Chromatin Integrity of Human Spermatozoa. Berrios, M.



R-8211. Continuous Flow Photoreactor Cell for Irradiating Extracorporeally Circulating Blood, Suspended Cells and Photosensitive Conjugates. Berrios, M. and Conlon, K. A.